



- Applicant: TRACT / WRA / KAA
- Developer: Canterbury Bankstowns Council
- Demolition of existing aquatic centre
- Construction of new 2 story facility including aquatics, gym, recreation , hospitality , ancillary offices, allied health / wellness amenities with outdoor 50m pool & waterplay components.

Design Response

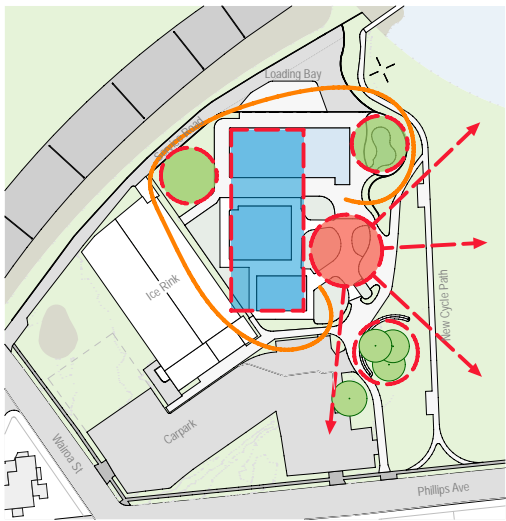


Diagram 1

Scheme embraces pools and wraps them in both built structure and landscaping.

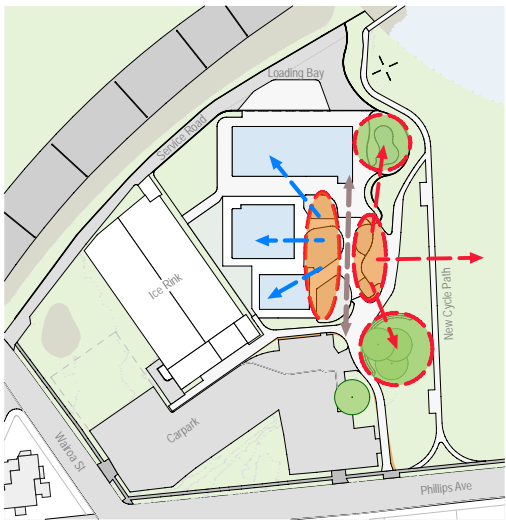
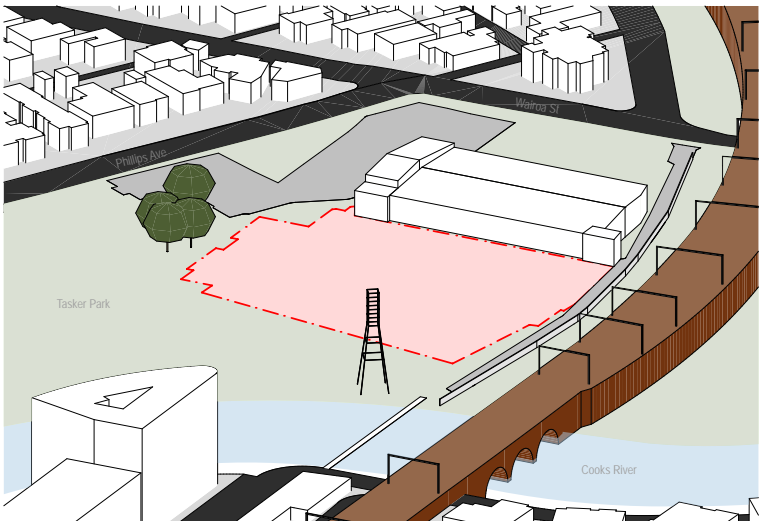


Diagram 2

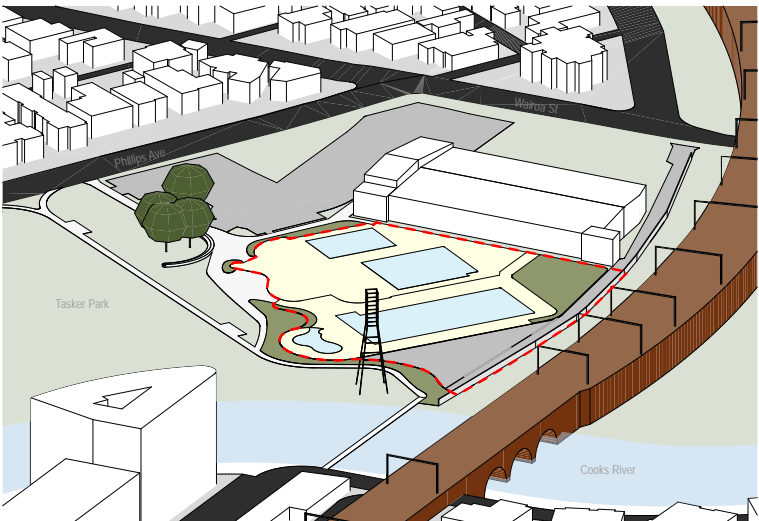
Ground floor of building dissected by entry sequences.
Support facilities address and connect directly with pools.
Service facilities (café and upper floor gym / exercise rooms) address and overlook park, childrens play area and vistas to trees and river.



Massing Diagram 1

Site

- Existing Site - After Demolition
- Fig Trees



Massing Diagram 2

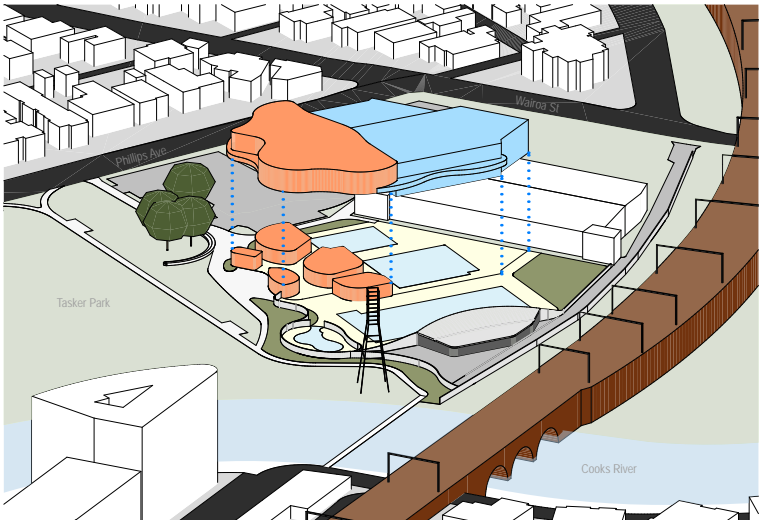
- Footprint of new Centre
- Pedestrian / Cycle Paths
- Landscaped Areas
- Pools / Water Play
- Built / Paved Areas



1. Potential boardwalk for better site activation and connection from Tasker Park and Little Tasker Park
2. Poor amenity zone with views to river obstructed by railway and electrical pylon. Heavily affected by railway proximity restrictions
3. Existing bridge and footpath location around pylon not ideal due to poor amenity and pedestrian experience
4. New pedestrian and cyclist bridge from Charles St as part of projected future works will provide better connection to the aquatic centre and Tasker Park
5. Future bleacher seating could improve the connection and activation of Tasker Park interface and be used as spectator seating
6. Existing fig trees form key feature landscape elements of park. Design preserves fig trees as key elements of Tasker Park and entry plaza to aquatic centre
7. Existing carparks retained. Provide safe vehicular entry points to and from park
8. Ice Rink & Play Area retained. Do not form part of project scope
9. Service Road located at rear of site adjacent railway line to minimise impacts on park
10. New Aquatic Centre located generally within existing pool site area to minimise impacts on open space
11. Aquatic Centre provides sinuous edge to park
12. Proposed development occupies existing aquatic centre footprint and minimises impacts on existing green space

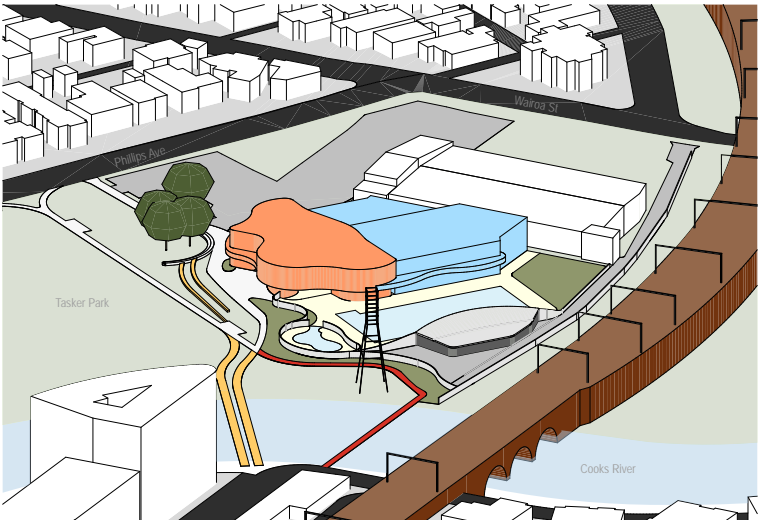
Diagram 3

Design analysis and future opportunities



Massing Diagram 3

- Building 'Pods'
- Pool Hall
- Loading / Servicing



Massing Diagram 4

- Future Opportunities: Existing Bridge and Path to be Demolished
- Future Opportunities: New Pedestrian and Cyclist Paths, Bridge, and Tasker Park Bleacher Seating

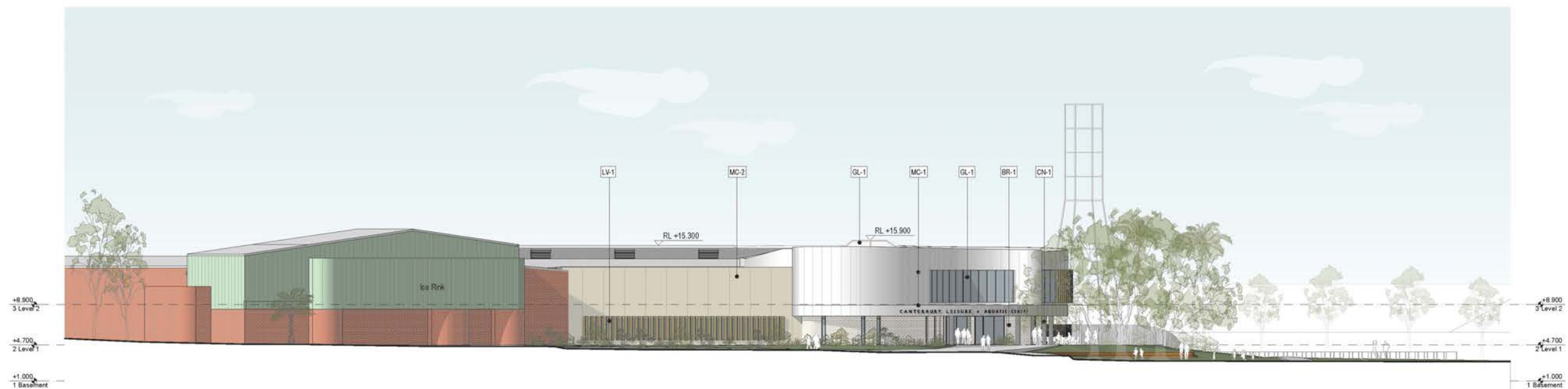
Site Plan





CLADDING TYPES	
GL-1	High performance double glazing system U Value Max 2.5 w/m2K Colour: Clear SHGC 0.3
BR-1	Brick veneer wall including 110 thick solid clay bricks, 50thick clear cavity, 150 thick steel stud frame, 50 thick R1.2 8100 thick R3 Rockwool batts and layer of plasterboard internally.
MC	Metal Cladding 0.62bmt thk Profile metal cladding - colorbond finish over tophats / sarking
SCREENS	
LV-1	Prefinished perforated aluminium louvre (50% open) affixed to external glazing frames via integrated brackets. Nominal size 450D x 50W - Colour to match window frames.
AS-1	Aluminium Screen fixed on proprietary carrier system. Refer to supplier's recommendations and requirements.

1 South Elevation
1:250



2 West Elevation
1:250



AS-1
Aluminium Screen fixed on
proprietary carrier system.



BL-1
Concrete Block
Stack bond pattern
Face: Smooth



BR-1
Beige brick veneer
cavity wall



CN-1
Off-form Concrete.



GL-1
High performance double
glazing system
U Value Max 2.5 w/m2K
Colour: Clear SHGC 0.3



LV-1
Perforated aluminium
louvre (50% open)
Nominal size 450D x 50W



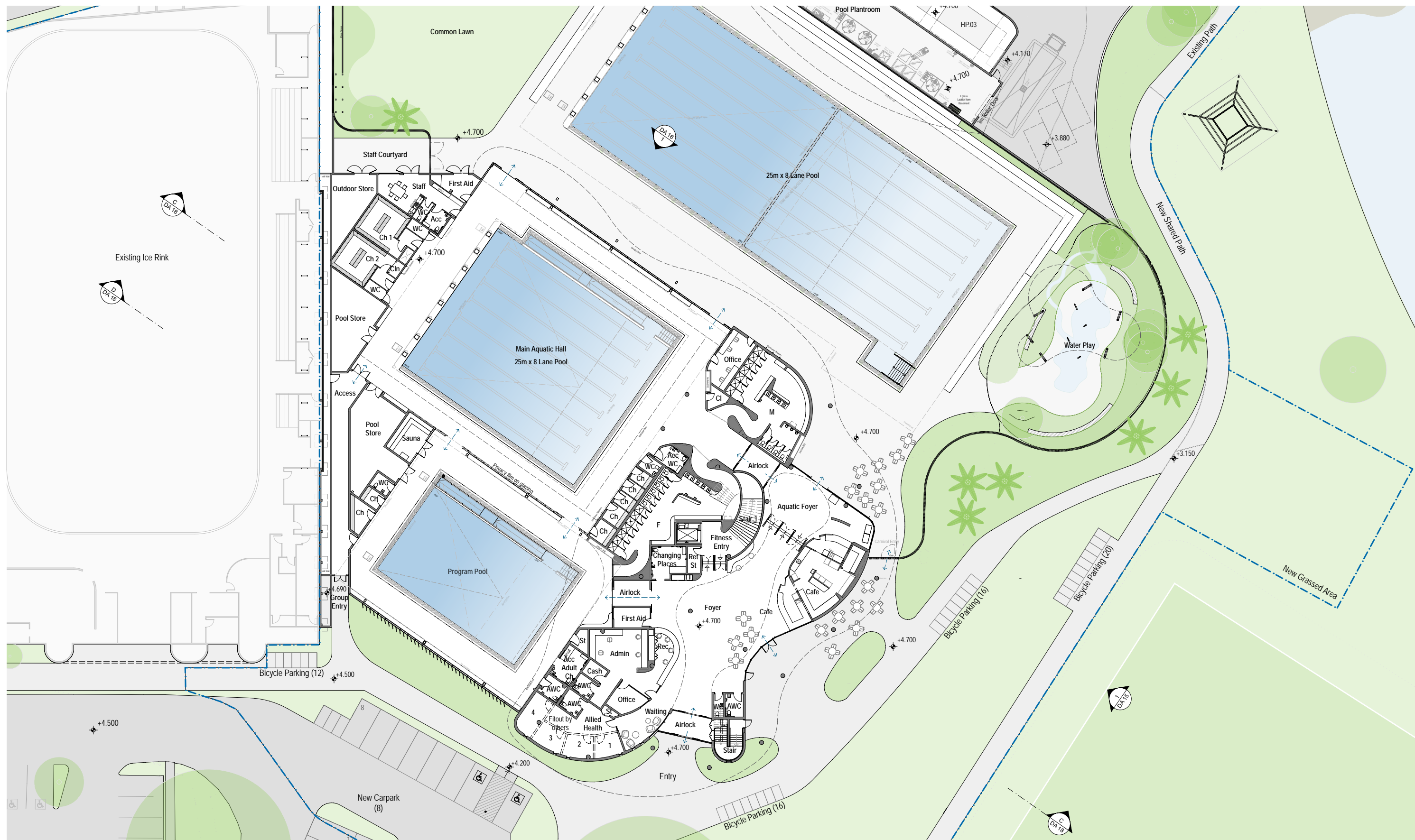
MC-1
Metal Cladding -
colorbond finish



MC-2
Metal Cladding -
colorbond finish



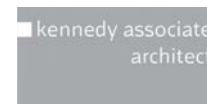
TL-1
Ceramic Tile.



Level 1 - Floor Plan



Canterbury Leisure & Aquatic Centre





Level 2 - Floor Plan



Canterbury Leisure & Aquatic Centre

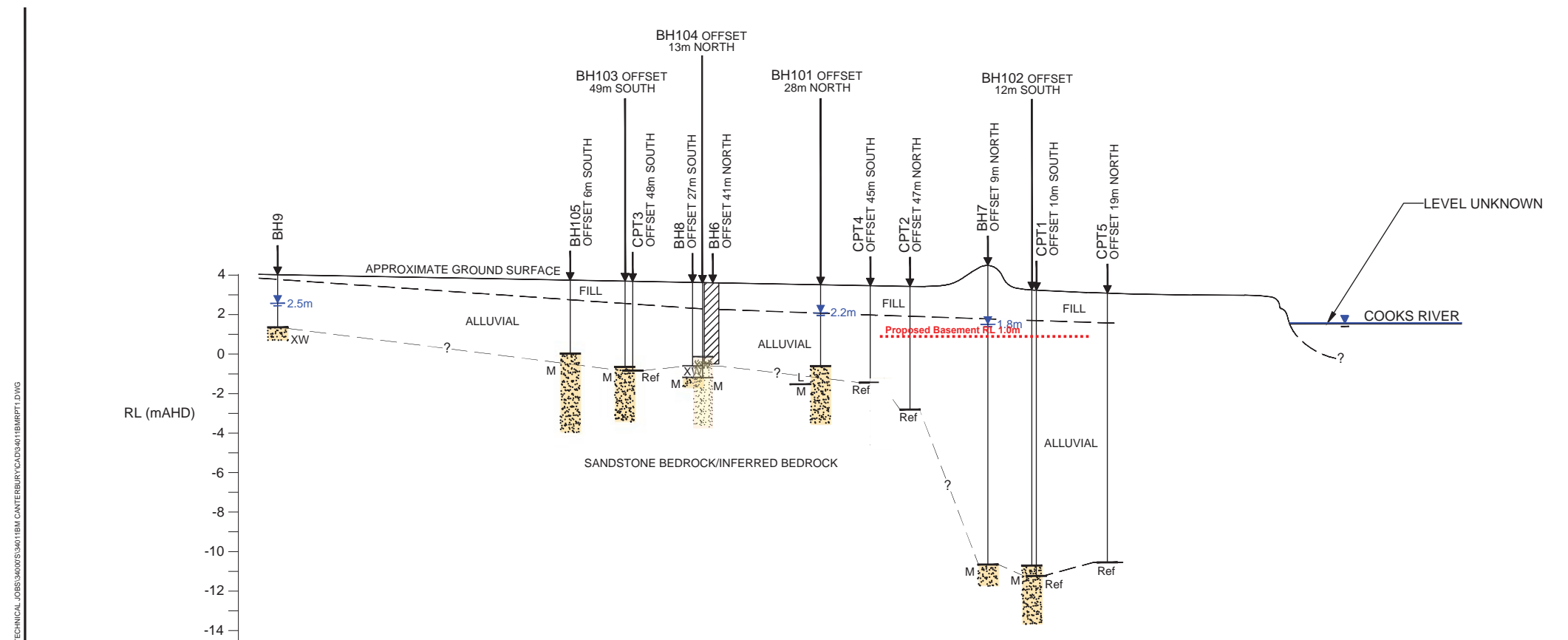


williamsross

kennedy associates
architects



- Geotechnical
- Ground water analysis
- Acid Sulphate soil
- Soil contaminate assessment
- Inground Service investigation
- Arboricultural
- Sydney Water Feasibility
- Building Regulatory / NCC
- Fire Engineering
- Social Health Impact Statement
- Acoustic Assessments
- Operational & Servicing
- Waste Report
- Traffic Assessment
- Accessibility Assessment
- Cost Analysis



- Flooding & Stormwater
- Building Regulatory / NCC
- Fire Engineering
- Social Health Impact
- Acoustic Assessments
- Public Art Consultation
- Lifesaving Design assessment
- Environmental & Sustainable Design
- Lighting & Glare analysis

SOCIAL MEDIA
Currently information on the project is available on Council’s webpage, Instagram and Facebook, including a separate Aquatics Facebook page. Our Mayor announced the project on Channel 9 (Sydney News) on the evening of 22 September 2021 with a brief look at the flythrough.

FACEBOOK POST – CANTERBURY LEISURE AND AQUATIC CENTRE PAGE (9 SEPTEMBER 2021)

LIKES: 358
COMMENTS: 297
SHARES: 49

FACEBOOK POST – CITY OF CANTERBURY BANKSTOWN PAGE (15 SEPTEMBER 2021)

LIKES: 155
COMMENTS: 42
SHARES: 22

INSTAGRAM POST – CBLEISURE AND AQUATICS (16 SEPTEMBER 2021)

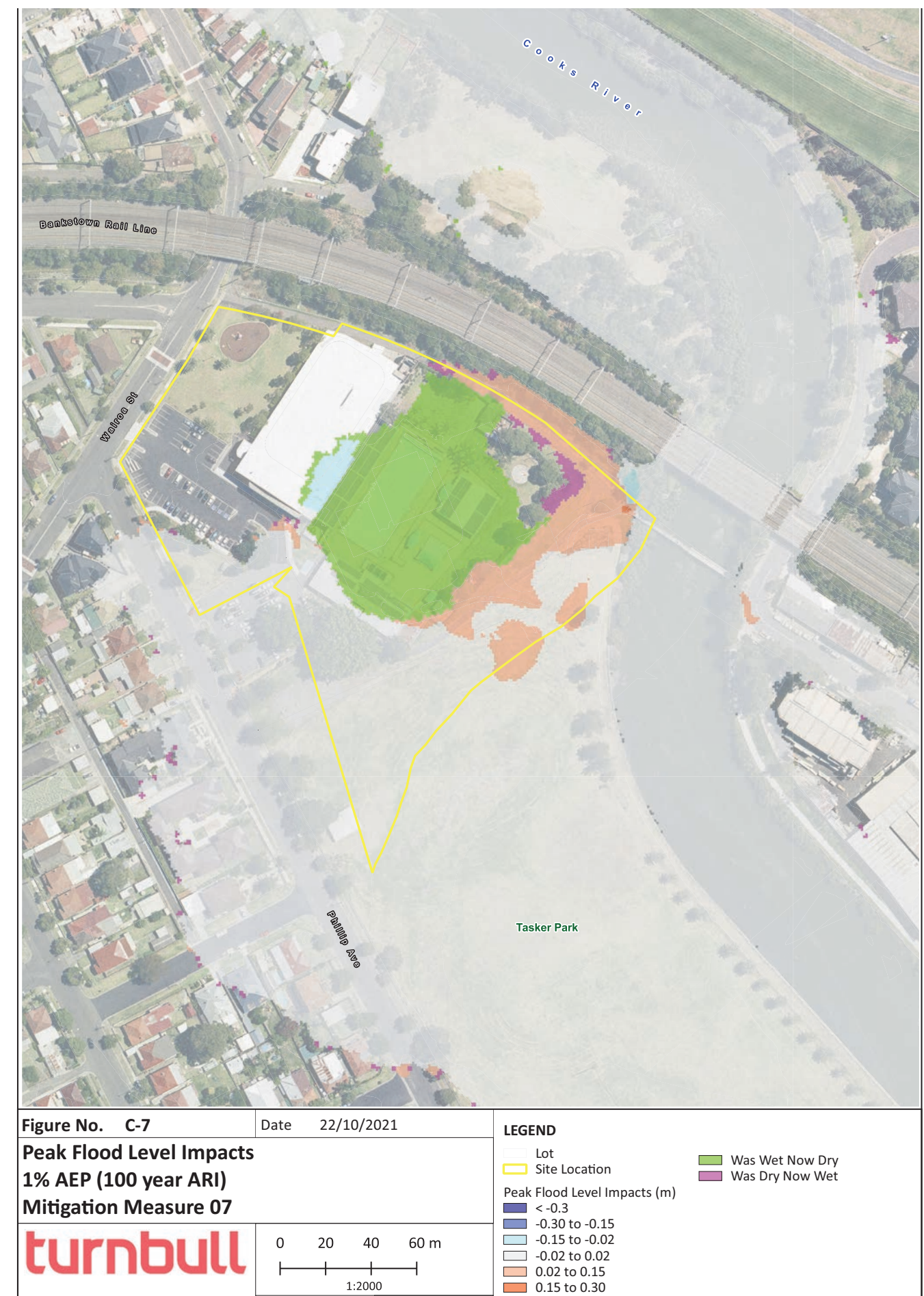
VIEWS: 119
COMMENTS: 1

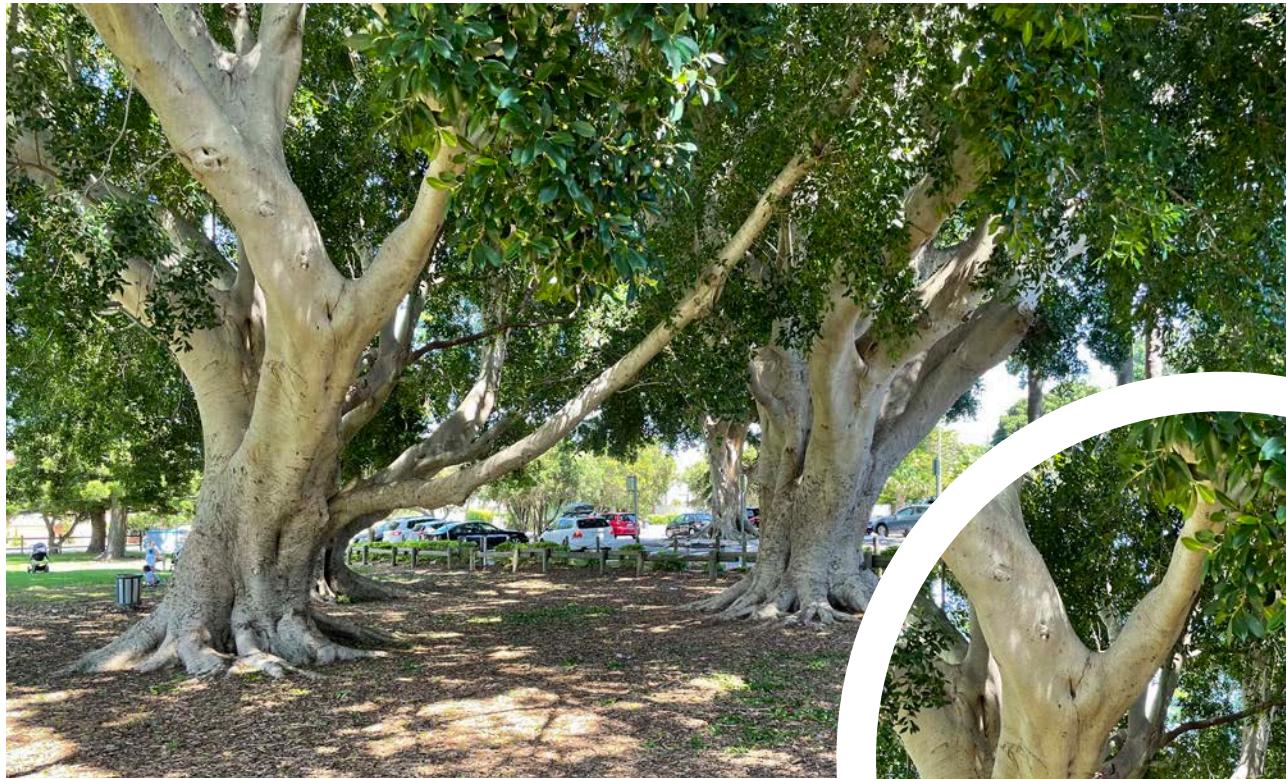
INSTAGRAM POST – CBLEISURE AND AQUATICS (8 SEPTEMBER 2021)

LIKES: 26
COMMENTS: 1

A breakdown of social media performance as of 10 September 2021:

- 18,500 organic reach
- 12 per cent engagement
- 379 click throughs to the website





- Future Design Opportunities
- Bridge & Connection
- Little Tasker Park Link
- External lighting strategies

Visioning

Curatorial Vision

where the water meets the land speaks to the Cooks River community, where the delicate microcosms of river ecology meet the macrocosms of urban life by the water's edge.

From the clear open waters at Botany Bay to the winding estuarine routes which trail through all of Sydney's regions, water has shaped the landscapes and lives of those who live around it for thousands of years. Not far downstream from Canterbury in Kendrick Park lies a midden, layers upon layers of oyster and cockle shells revealing the ways in which the local Darug people once lived off resources from this water ecology.

where the water meets the land speaks to the concurrent stories of water life which reveal themselves across the passage of time. Today, Cooks River is shared by the diverse multicultural community of Canterbury, who walk and cycle by the shoreline, with birds flying overhead and fish swimming amongst mangrove roots. Each year, locals gather to celebrate Wurrldjal Festival, honouring the seasonal migration of thousands of mullet which swim upstream.

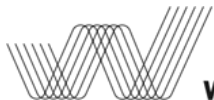
Below the fig trees at Canterbury Aquatic Centre where the gentle sounds of flowing water can be heard, art will tell stories of water and land, inviting people to pause, rest and interact with the unique ecology of place. Artists may explore the vitality of these water resources for our communities today, engaging with stories of Cooks River's past, present and future. Through creative expressions, public art for Canterbury Aquatic Centre will speak to this area as a traditional and contemporary place of water, recreation and respite.



- Public Artwork placement & Integration



Canterbury Leisure & Aquatic Centre



williamsross



